



veo+



16:64PR | 16:128PR | MULTISCAN
32:64PR | 32:128PR | UT - TOFD 2PR

Simplicity | Capability | Reliability



Smart Portable Phased Array Solution Rethink Your Standard.

Multiscan Solution

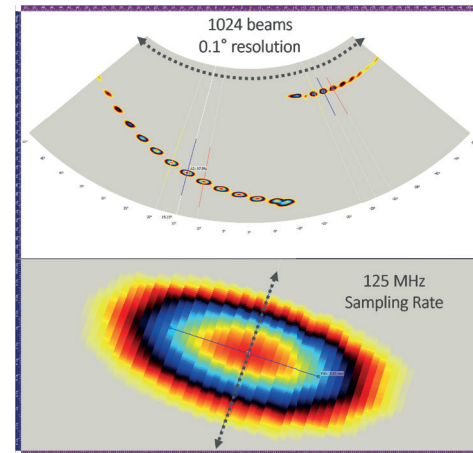
Retaining the best features of the established veo line, the new VEO+ is designed to meet the needs of today and tomorrow, making the VEO+ a smart and future proof asset for your business. Key design elements considered in the development of the VEO+ are user and performance focused. Based on a superior and innovative digital technology, four available PA configurations (**16:64PR, 32:64PR, 16:128PR or 32:128PR**). are offered as software options. Upgradeability in the field when needed!

Superior Digital Technology

The VEO+ electronic & software is powered by a new architecture offering superior data throughput and unsurpassed computational capacity to deliver fast and accurate results in the most demanding conditions. It allows inspectors to easily create high resolution volumetric scans and record very precise data sets with exceptional measurement precision.

These performances come from an impressive 32 channel PA beamformer providing exceptional SNR, enhanced digital signal processing and the legendary Sonatest ActiveEdge® pulser technology. Thanks to its Linux® 64-bit operating system and its fast 128GB SSD memory capacity, data file size is not a concern for VEO+. Data compression is yet another feature allowing one to record huge amount of information in more manageable data file size.

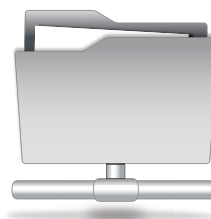
HIGH RESOLUTION SCAN



Connectivity



NETWORK
FILES
TRANSFER



COMPLETE
REMOTE
CONTROL



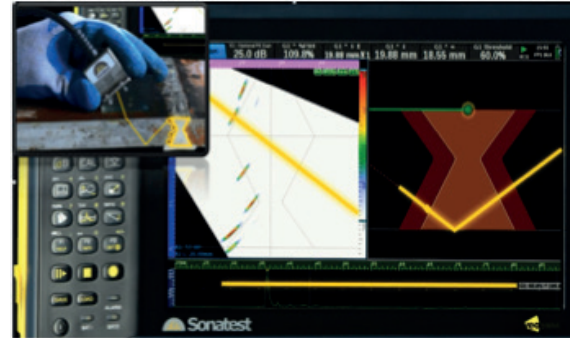
TRAINING &
PRESENTATION



Onboard Live 3D Scanplan

The VEO+ embedded modeling tools support multiple probes and scans, enabling quick and efficient set up of inspection plans. Choose from a range of weld geometries, render and visualise probes on the part, at precise locations, representing reality with high fidelity. Then add sound paths, with skips, allowing to assess and ensure proper coverage as planned in the scan plan.

The VEO+ embedded modelling tools are invaluable assets and a reference for the inspection report, communicating inspections results more completely and more clearly, as well as providing precious information to increase users' level of expertise. This feature makes the VEO+ a choice of excellence for serious NDT schools looking to provide the best academic training to the future inspectors.



Remote Control Solution



Using Sonatest's UTLink software application, VEO+ can be fully used and controlled remotely, via a simple network connection. As VEO+ now offers WiFi along with its fast GB Ethernet port, the possibilities are practically unlimited. What about getting real-time advice by an expert sitting anywhere in the world? Absolutely!

- Available for Windows 7, 8 and 10
- Easy installation with quick connection procedure
- Very simple user interface (virtual instrument!)
- Instrument auto-detection (works for veo+ & prisma)

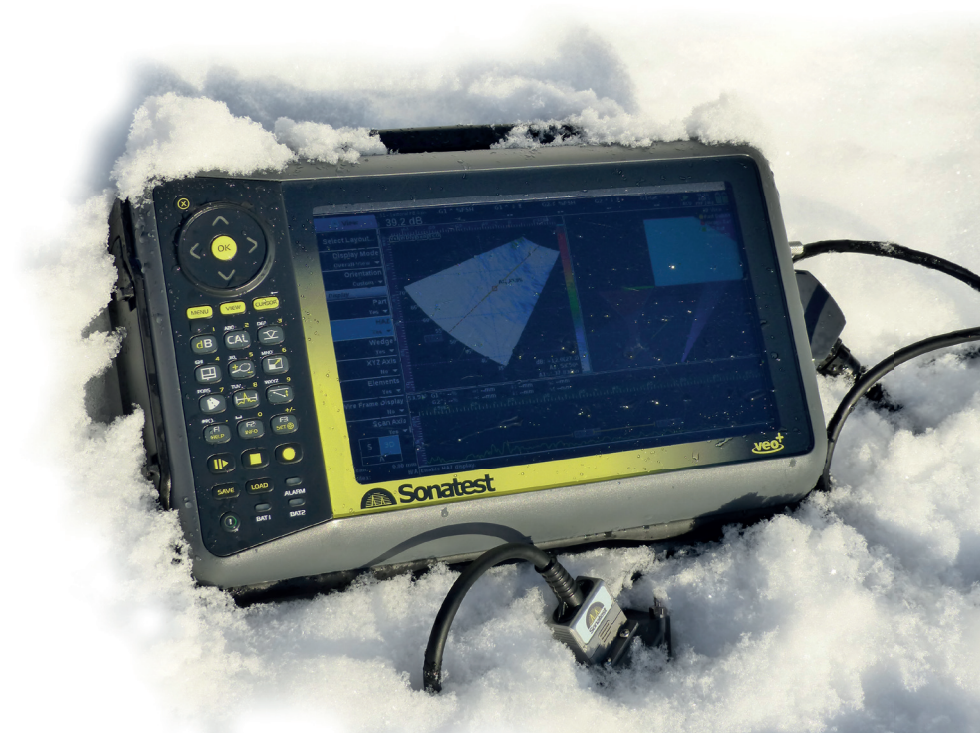
Advanced Analysis Software



UT Studio software application, which comes as part of the VEO+ package, is used to manage inspection configurations, perform data analysis and build precise reports. VEO+ data files are easily transferred via a network or a USB data key to the PC. Then, thanks to a comprehensive, right click / drag and drop user interface, one can create new data views, customize color palettes, add and modify gates and measurement parameters, generate extended reports and much more. In no time, be able to accomplish amazing things and get the job done.

Rugged

The VEO+ enclosure has also been designed to withstand the toughest of environments and has been successfully tested in the field for 5 years.





Power & Precision



Civil & Construction



Mining



Transport

- Complex geometry parts
- Deep penetration
- Attenuative special alloys
- High-Res. weld inspection



Software Upgrade

- Standard weld inspection
- FAST corrosion mapping
- FAST composite inspection
- Multi-Scan apps



Oil & Gas



Aerospace



Welding



Performance



Versatility



Power Generation



Oil & Gas



Service Companies

- Heavy thickness weld inspection (S-Scan & L-Scan)
- 2x 64E probes
- 4x 32E probes
- 6x 16E probes

128 Channels Multi-scan



- Standard weld inspection
- Large & fast corrosion map
- Large & fast composite map
- Multi-Scan apps. (128 ch.)



Oil & Gas



Aerospace



Wind Energy

Productivity



Specification



General

	Phased Array (32:128PR)	UT-TOFD(2P)
Multiscan Quantity	Up to 6 scans	Up to 2 scans (UT & TOFD)
Pulsers / Receivers	32:128PR	2PR (4 connectors)
Gain Range	80dB	100dB
Sampling Frequency	125MHz @ 12 bits	50/100/200MHz @ 10 bits
(processing 16 Bits)	(processing 16 Bits)	
System Bandwidth	0.2 to 23 MHz	0.2 to 18 MHz
Max Pulse Rate Frequency	50 000 Hz	20 000 Hz
Pulse Voltage	100-50V ActiveEdge©	400-100V ActiveEdge©
Focussing Mode	Constant : Depth, Path or Offset	na
S-Scan Resolution	up to 0.1°	na
L-Scan Resolution	1 element or double resolution	na
Max PA Beams (focal laws)	Up to 1024 beams	na
Measurement tools	EXTRACTION BOX, 4 gates/ A-Scan,TCG, DAC, Split-DAC	4 gates/A-Scan, TCG, DGS/ Split-DGS, DAC/Split-DAC
Max Points per A-Scan	Up to 8192 points per A-Scan (sub-sampling available)	
Data Storage & File Size	128 Gb SSD & no file size limit	
Operating System	64 bits Linux® OS / Powered by Intel® CPU Core	
Analysis Software (PC)	UTStudio® for Windows® 7-8-10 & Linux® OS	
Remote Control Software (PC)	UTLink® for Windows® 7-8-10 OS	
Onboard Scan Plan Tools	Onboard 3D live rendering	
Onboard Reporting Tools	PDF auto-report, Export data to CSV file, Save screen capture	
Onboard PDF Reader	Ability to load and read any PDF documents	
Integrated Online Help	ACTIVE help genius for parameter optimization procedures, reports	
Calibration Standards	ISO18563 (EN16392) & EN12668	

User Interface & Ports

PA & UT Connectors	1 IPEX 128 channels	4 LEMO 1 or 4 BNC
Instrument Display	10.4" wide LED-backlit LCD, enhanced sunlight readable 1024 x 600	
Encoder Ports	2 axes : Scan, Index or Clicker (LEMO 1)	
GPIO Port (TTL)	Start, Stop, Index, Reset, Alarm (s), Trig... (LEMO 1)	
Communication Ports	WiFi 802.11n, Ethernet Gigabits & 3 master USB2	
Remote Display Ports	WiFi, Ethernet or VGA	
Data Transfer Ports	WiFi, Ethernet or USB	

Operating time, Enclosure & Environmental

Operating Temperature	-10°C to 40°C (14°F to 104°F) storage -20°C to 60°C (-13°F to 140°F)
Operating Time	6.6h (hot swappable batteries)
Power Input	AC 110V/240V @ 50Hz/60Hz
Unit Dimensions	115 x 220 x 335 mm (4.52 x 8.66 x 13.19 in)
Weight	4.54 kg (10 lb) no battery, 460 g (1 lb)/battery
Environmental Rating	Designed for : IP66, MIL-STD-810G

(Subject to change without notice)



Standard Package

Veo+	16:64PR	BNC
Veo+	16:64PR	LEMO
Veo+	32:64PR	BNC
Veo+	32:64PR	LEMO
Veo+	16:64PR	BNC
Veo+	16:128PR	LEMO
Veo+	32:128PR	LEMO
Veo+	32:128PR	BNC

Software & Options

CSV Export
Upgrade PA 32PR
Upgrade PA 128CH



Accessories

32:32 Y-Splitter I-PEX
64:64 Y-Splitter I-PEX
Phased Array Probes
TOFD & UT Probes
Wedge
Encoders
*More Accessories Available

Scanners



Wheelprobes



Distributed by:

Sonatest (Head Office)
Dickens Road, Old Wolverton
Milton Keynes, MK12 5QQ
t: +44 (0)1908 316345
e: sales@sonatest.com

Sonatest (North America)
12775 Cogburn, San Antonio
Texas, 78249
t: +1 (210) 697-0335
e: sales@sonatestinc.com

Part No: 147406 (Issue 1_March2016)

